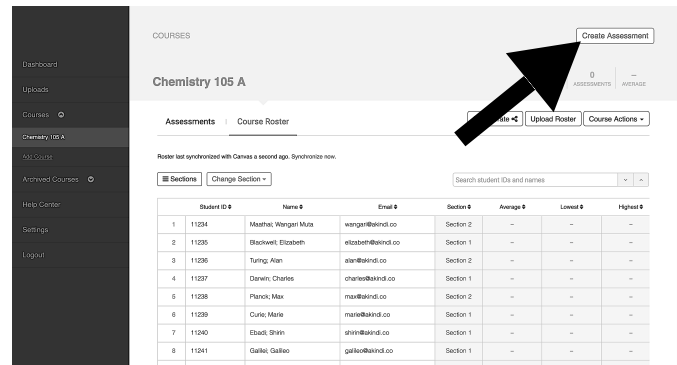


Running an Assessment in Akindi

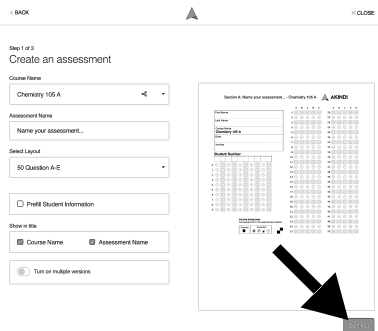
This step-by-step guide will help you setup and run an assessment in Akindi. If you have any questions or get stuck along the way, please contact us using our live in-app chat.

Step 1: Create an Assessment



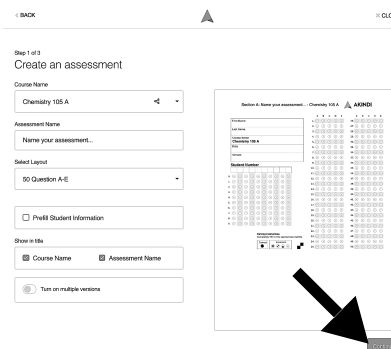
Step 2: Customize Your Bubble Sheet

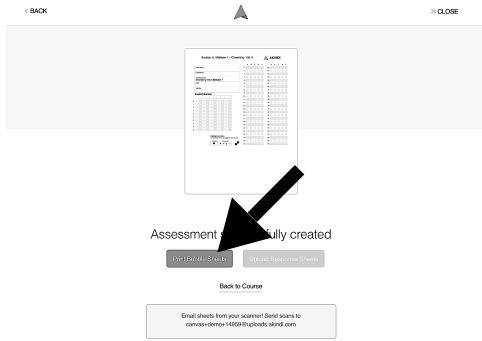
Complete the customization fields, then click 'Continue'.



Step 3: Enter Your Answer Key

Digitally select the correct response for each question, then click 'Continue'.



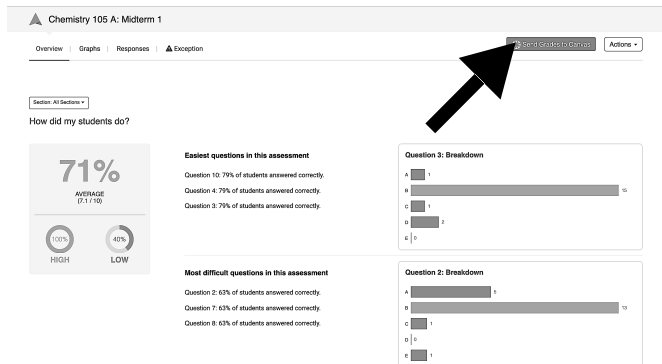
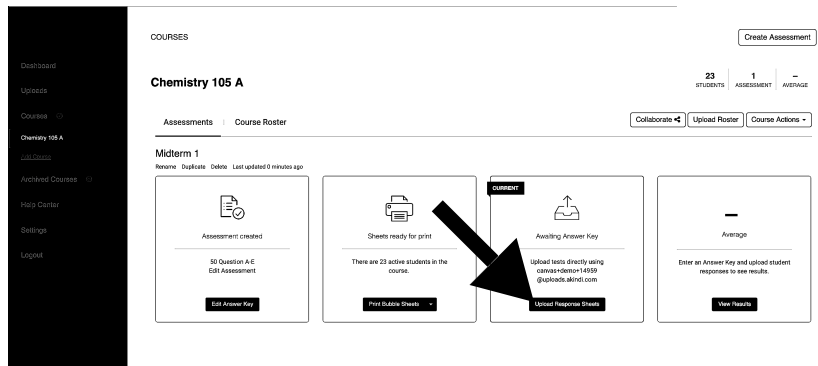


Step 4: Print Your Bubble Sheet

Using any printer and regular paper, print the Bubble Sheets and administer the test. Students can use a pencil or pen to complete the Bubble Sheet.

Step 5: Upload the Response Sheets

Using any scanner, scan the completed test sheets and upload the PDF to Akindi.



Step 6: Analyze and Export the Results

Questions? Comments? Feedback?
Please contact us anytime at through our live in-app chat.