

In case of a Tornado:

Stagmaier Hall:

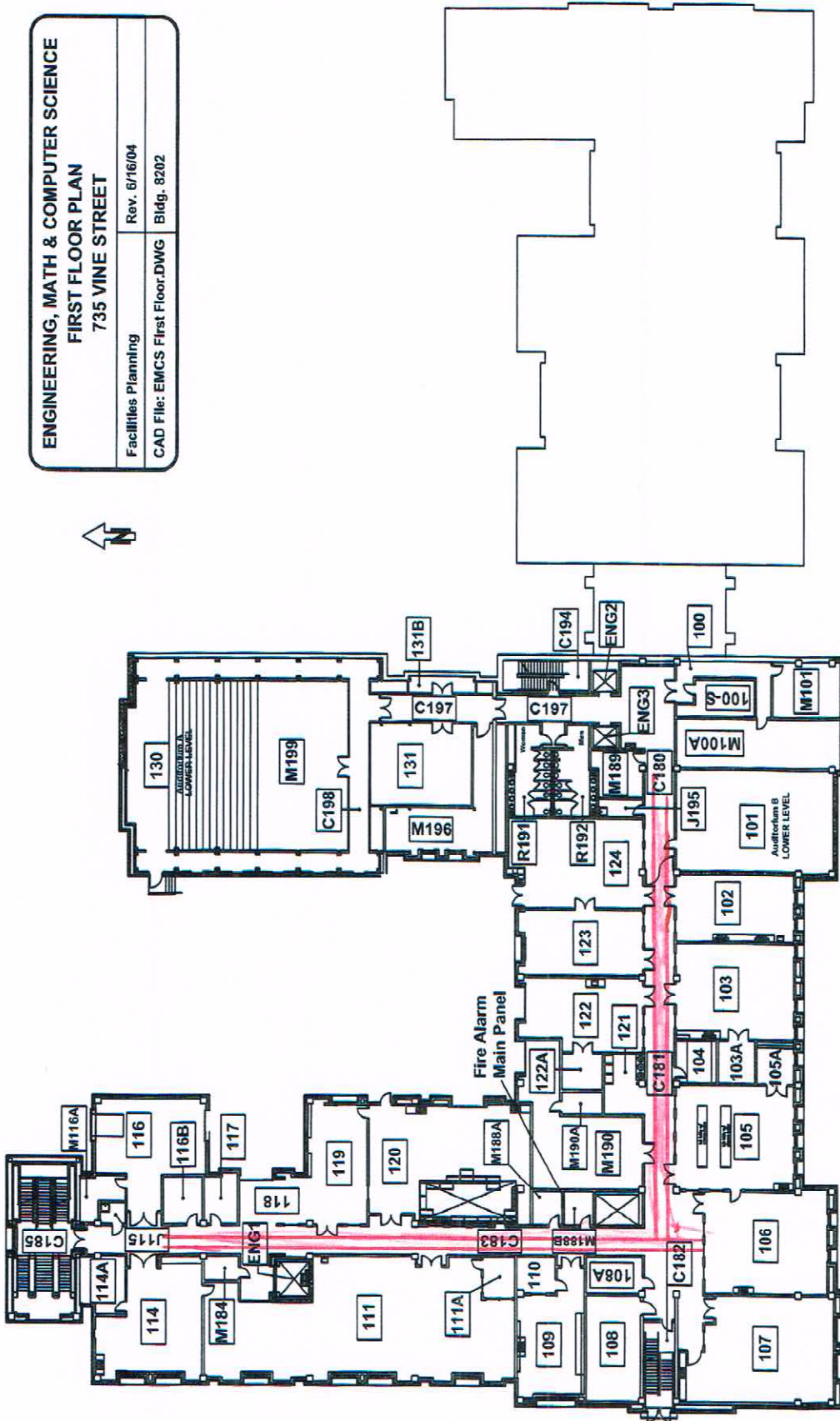
If you have to find immediate shelter, and you have no time to get downstairs, go in the hallway of the floor you are staying on. If you have warning, and time, get to the lowest level, and go to an interior hall way with no windows, on the first floor. The stairway is a good place, the kitchen on the bottom level is a good place.

Metro Hall:

Head to the first floor, and find a hallway that is clear of windows.

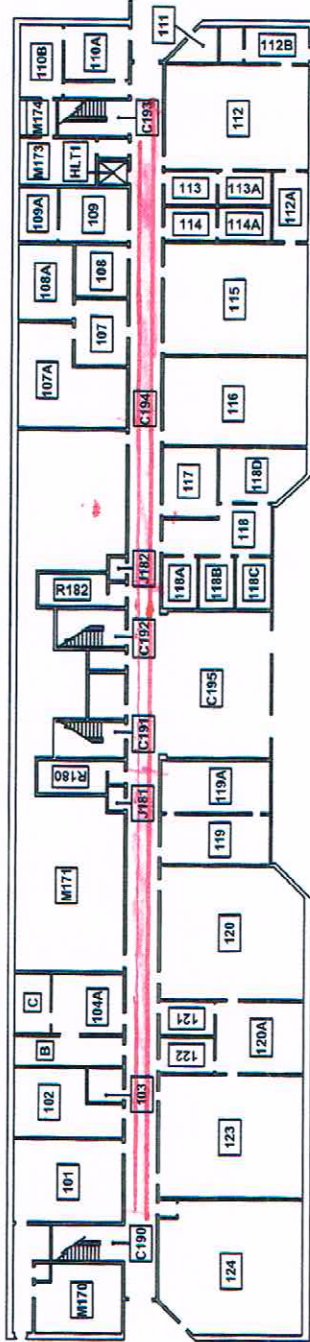
Palmetto Street

<b>ENGINEERING, MATH &amp; COMPUTER SCIENCE</b>	
<b>FIRST FLOOR PLAN</b>	
<b>735 VINE STREET</b>	
Facilities Planning	Rev. 6/16/04
CAD File: EMCS First Floor.DWG	Bldg. 8202



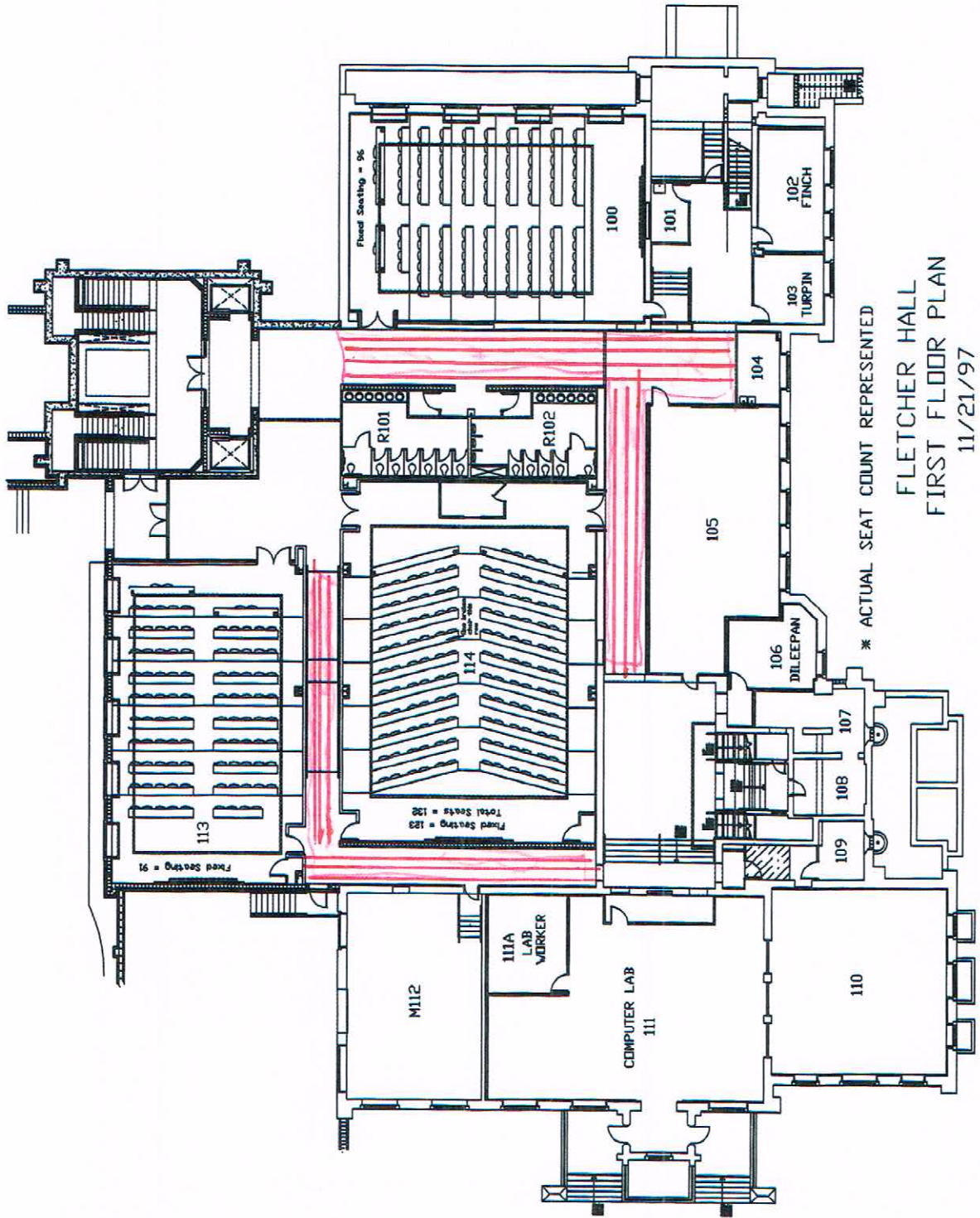
Vine Street

E. 5th Street

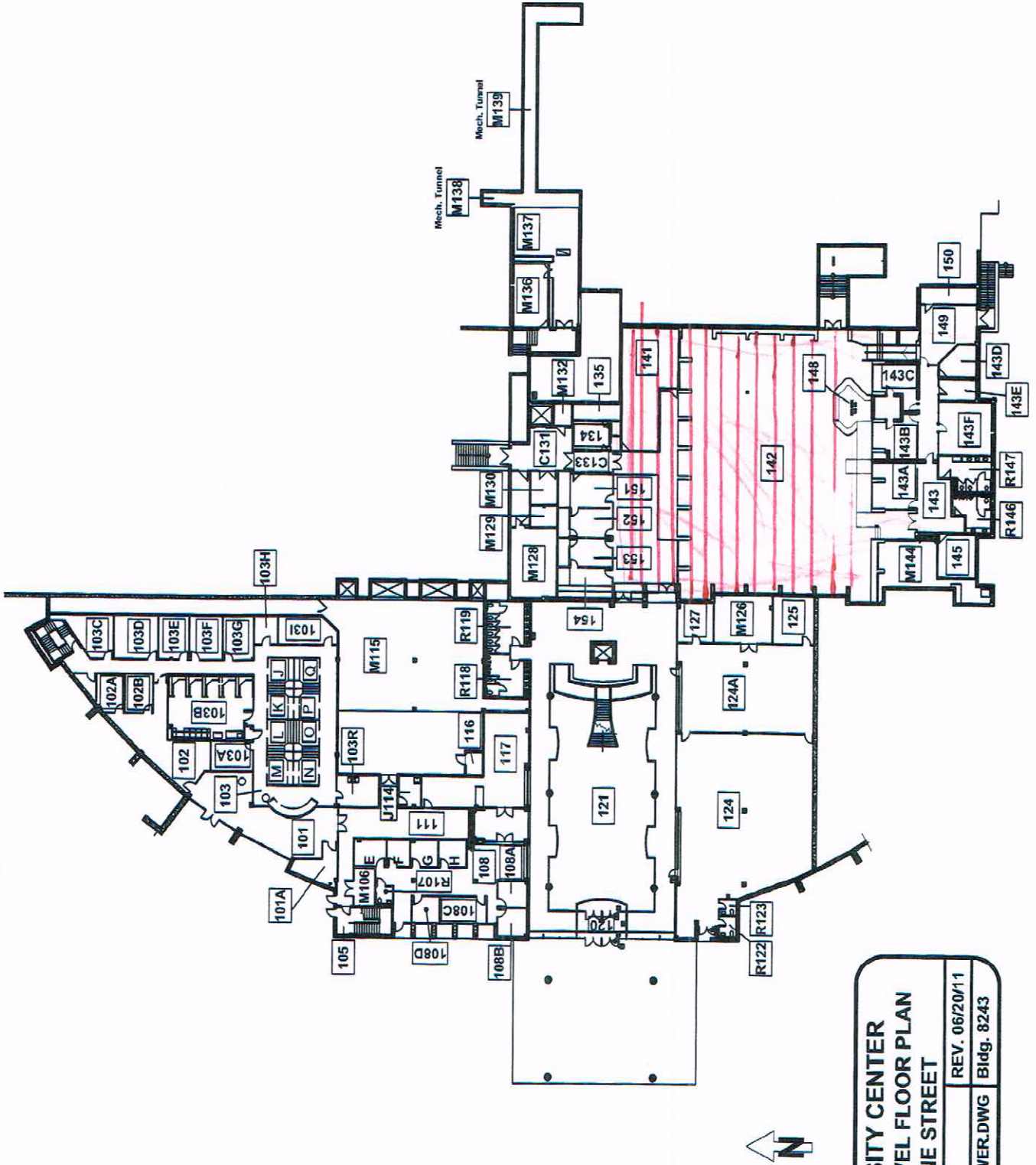


**HOLT HALL**  
**FIRST FLOOR PLAN**  
**702 E. 5TH STREET**  
Facilities Planning  
CAD FILE: HOLT1  
REV. 10/15/13  
IMp. 80294



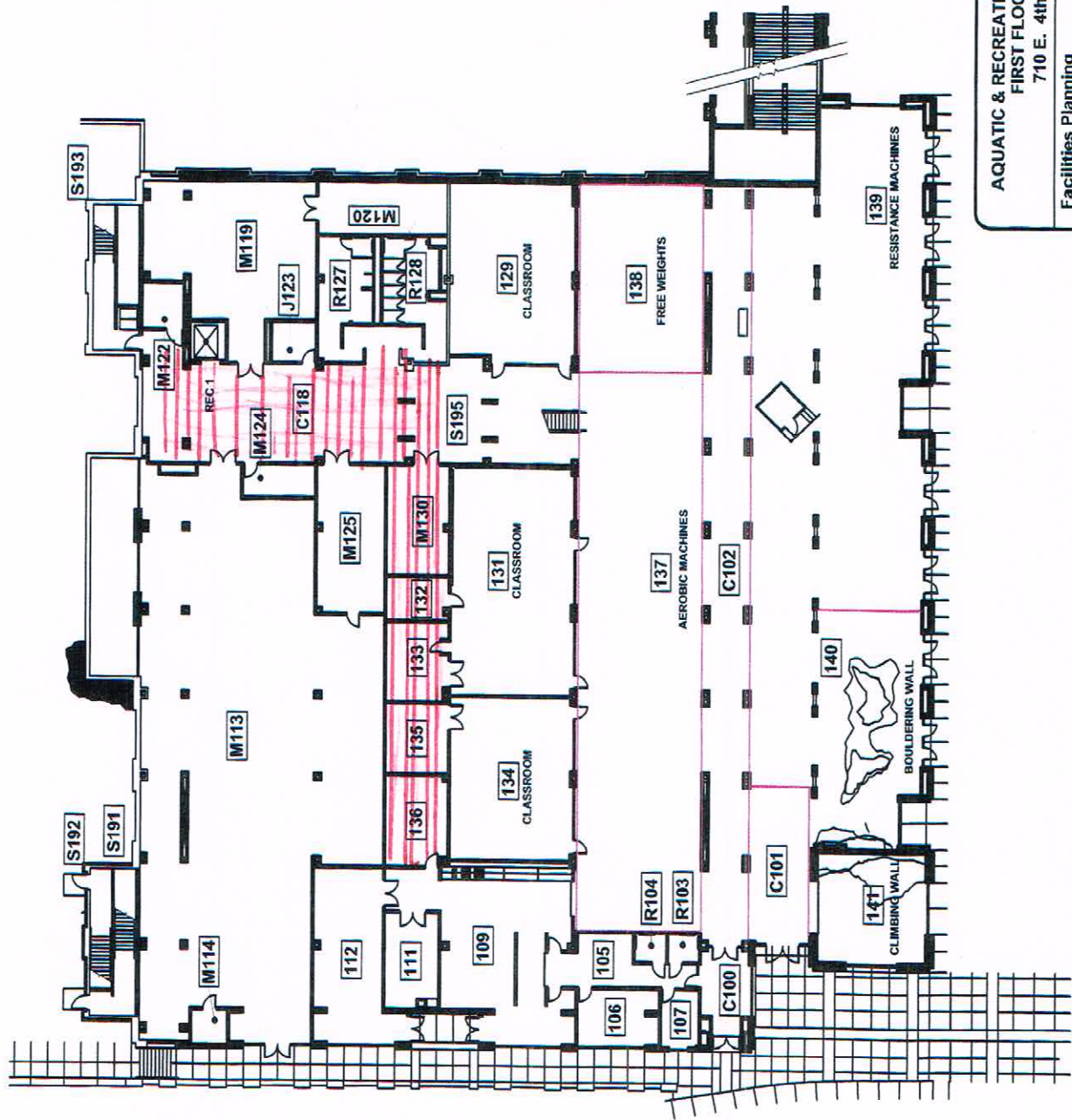


\* ACTUAL SEAT COUNT REPRESENTED  
 FLETCHER HALL  
 FIRST FLOOR PLAN  
 11/21/97

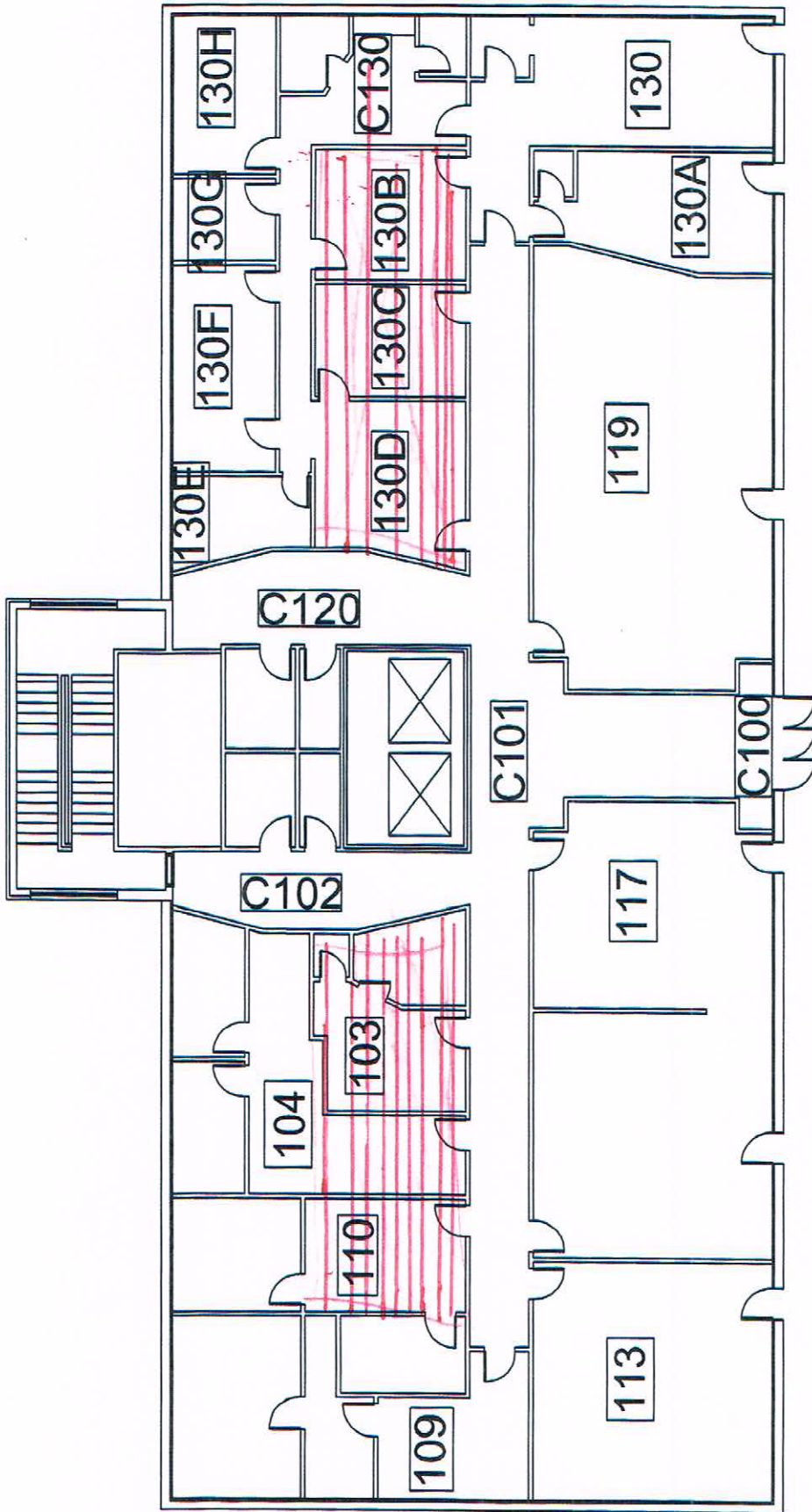


Vine Street

<b>UNIVERSITY CENTER</b> <b>LOWER LEVEL FLOOR PLAN</b> <b>651 VINE STREET</b>	
Facilities Planning	REV. 06/20/11
CAD FILE: UC_LOWER.DWG	Bldg. 8243



<b>AQUATIC &amp; RECREATION CENTER (ARC)</b> <b>FIRST FLOOR PLAN</b> 710 E. 4th street	
Facilities Planning CAD File: ARC_1st.DWG	Rev.4/25/2013 Bldg: 8217



DOCTORS BUILDING 1ST FLOOR 744 MCCALLIE	
REV. 5/6/13	BLDG.#8323