
ROLAND W. HAYES CONCERT HALL
TECHNICAL SPECIFICATIONS



MAILING ADDRESS

UT Chattanooga
Fine Arts Center #1351
615 McCallie Avenue
Chattanooga, Tennessee 37403-2598

SHIPPING ADDRESS

UT-Chattanooga
Fine Arts Center
752 Vine Street Room 324
Chattanooga, Tennessee 37403-2598

TELEPHONE INFORMATION

General Information & Ticketing	(423) 425-4269
Technical	(423) 425-5325
Bookings & Administration	(423) 425-4371
Fax	(423) 425-5249

TABLE OF CONTENTS

<u>ABOUT</u>	2
<u>LABOR</u>	3
<u>LIGHTING INFORMATION</u>	4
<u>SOUND INFORMATION</u>	5-6
<u>FLY RAIL INFORMATION & MEASUREMENTS</u>	7-8
<u>INFORMATION OF LOCAL AMENITIES</u>	9
<u>DIRECTIONS TO FAC</u>	10
<u>APPENDIX</u>	11

ABOUT THIS TECH PACKET

The purpose of this material is to orient the user to the specifics of the Roland W. Hayes concert hall & its equipment. This packet is by no means exhaustive in its resources. However, it should provide the reader with enough reference material to accurately plan his or her event.

In this document you will find tables and diagrams describing the space & its equipment which should also include a scale drawing of the concert hall and its associated facilities (dressing rooms, storage areas etc.). If your event requires more information than is included here, please contact the Technical Director of the Roland W. Hayes Concert Hall with your request.

CONTACT INFORMATION

Box Office Manager Sue Carroll	sue-carroll@utc.edu (423) 425-4371
F.A.C. Manager/Technical Director Sean Stewart	sean-stewart@utc.edu (423) 425-5325
Patten Performance Manager Bob Boyer	bob-boyer@utc.edu (423) 425-4379

LABOR

Box office, Ushers, House Technicians Are Students and Part Time Workers.

Outside Labor Sources:

I.A.T.S.E. Local 140 (Local Stage Hands Union)

P.O. Box 132
Chattanooga, Tennessee 37405
Contact: Bob Hassel @ (423) 933-4658

Tennessee is a right to work state and we are a non-union house,
dedicated to the instruction of students in the Arts

LIGHTING INFORMATION

Instruments – Berkey Colortran / ETC

36	6" Fresnels ; 750 Watts
50	Source four 575watts 19°, 26°, 36°, 50°
50	20°, 30°, 40° Ellipsoidal; 1000 Watts (changeable)
4	12° Ellipsoidal; 1000 Watts
18	Par 64; WFL, MFL, NFL; 1000 Watts
10	6" Berkey Colortran Cyc Strips 108's; 2 X 3 Circuits; 1000 Watts each.
9	2 Cell Altman Far Cys 1000 Watts each. 2 spare
6	7" R40 Strips; 4 X 4 Circuits; 150 Watts each.
1	Colorspot (Follow Spots); 1000 Watts (FEL).

DIMMERS – ETC Sensor and Unison House System

<u>Dimmers (By Numbers)</u>		<u>Capacity</u>
1 - 330	Stage Circuits	2.4 KW
374 - 392	House light Circuits	2.4 KW

Control Console – ETC Emphasis Insight Faceplate

512	Control Channels (DMX) Using ETCLink
600.0	Cues
108	Sub-masters
2000	Macros
1080	Effects
500	Groups
3	Monitors
1	Wireless Remote Focus Unit

Lighting Accessories

<u>QTY</u>	<u>Description</u>
8	16' Light Trees / "Booms"
50	Pattern Holders
25	Y's or "Twofer's" & Assorted Lengths of cable
16	6" 4-way Barn Doors

Circuit Locations (3 Pin/Stage Plugs X 257 Circuits: 20 AMP)

001 – 009	4 th Catwalk 60' Throw	113 – 116	Rear Wall
010 – 019	3 rd Catwalk 50' Throw	117 – 156	1 st Electric
020 – 041	2 nd Catwalk 40' Throw	157 – 176	2 nd Electric
042 – 056	1 st Catwalk 30' Throw	185 – 211	3 rd Electric
057 – 062	2 nd Box Boom (SR)	177 – 184	(2) 4-Circuit Drop Boxes
063 – 068	2 nd Box Boom (SL)	212 – 219	(2) 4-Circuit Drop Boxes
069 – 076	1 st Box Boom (SR)	220 – 237	(6) 3-Circuit Drop Boxes
077 – 084	1 st Box Boom (SL)	242 – 257	(5) Floor Pockets
085 – 108	Curtain Line	258 – 270	Misc. 50 AMP Circuits
109 – 112	Proscenium Wall	271-330	(10) 6 –circuit Drop Boxes

Company Switch

400 AMP / 3 Phase; Located SL at proscenium (Bare Wire Lugs)

SOUND INFORMATION

Mixing Console – Behringer X32

40 Input Channels
32 Programmable MIDAS Preamps

- Test Tones of 100Hz, 1K & 10K.
- 48 Volt Phantom Power built In.
- Backup Intercom System Built In
- iPad/iPhone Remote Control capability

Speakers – JBL

2 AC2215/95 House Speakers
4 3-Way Stage Monitors; S315B
2 3-Way Stacks; Sentry IV

Amplifiers – Crown

5 Crown K1; 400 Watts / Channel
1 75A; Booth Monitors; 40 Watts / Channel

Communication System – Clear-Com

Clear-Com Stations

- | | |
|--|--|
| <input type="checkbox"/> Light Console | <input type="checkbox"/> USR |
| <input type="checkbox"/> Sound Console | <input type="checkbox"/> USL |
| <input type="checkbox"/> Fly Rail | <input type="checkbox"/> DSR |
| <input type="checkbox"/> Patch Bay | <input type="checkbox"/> DSL |
| <input type="checkbox"/> Box Booms | <input type="checkbox"/> Orchestra Pit |
| <input type="checkbox"/> FOH Catwalks | <input type="checkbox"/> Follow Spot |
| | Lighting Positions
(Booth & Landings) |

System Configurations / Notes

Clear-Com system has two exclusive channels & party line capabilities. The Roland W. Hayes Concert Hall owns 6 sets (including headset & belt pack). Extra sets are available on demand - please notify in advance.

Microphones

QTY	Model	QTY	Model	QTY	Model	QTY	Model
1	RE20	4	SM57	1	BG4.0	3	PCC160
6	SM58	2	Bata 57	2	SM81	2	Shure 58/lav

Sound Accessories

2 Table Stands
3 Low tripod Stands With Booms
4 Regular Tripod Stands With Booms
2 Large Tripod Stands With Booms

Sound Media Equipment

- | | |
|--|--|
| CD Recorder/Player – Denon DN-C615,
HHB CDR, and Tascam SSCDR-1 | <input type="checkbox"/> Pitch Control |
| | <input type="checkbox"/> 3" & 6" Disc |
| | <input type="checkbox"/> 3" & 6" Disc |

FLY RAIL INFORMATION

PIPE	DISTANCE	HOUSE HANG	SHOW HANG	TRIM	NOTES	WIDTH
0	-3'9"	Main Drape	Main Drape			66'
PORT	-1'6"	Portal				45'
PL	0'0"				Plaster Line	
1	1'3"	1st Electric				50'
2	1'9"	1st Electric				
3	2'3"	12 x 39 Cloud				40'
4	2'9"	12 x 39 Cloud				
5	3'3"	Martin				40'
6	3'9"	Video Screen				40'
7	4'3"	DOES	NOT		EXIST.....YET	
8	4'9"	Spare				40'
9	5'3"					
10	5'9"					
11	6'3"	Black Border				50'
12	6'9"					
13	7'3"	Legs				60'
14	7'9"	Spare				50'
15	8'3"					
16	8'9"					
17	9'3"	2nd Electric				50'
18	9'9"	Spare				40'
19	10'3"	Full Stage Black				40'
20	10'9"	Spare				40'
21	11'3"					
22	11'9"					
23	12'3"					
24	12'9"	8 x 40 Cloud				40'
25	13'3"					
26	13'9"	Spare				40'
27	14'3"	Legs				60'
28	14'9"					
29	15'3"	Spare				40'
30	15'9"	Black Border				50'
31	16'3"					
32	16'9"	3rd Electric				40'
33	17'3"					
34	17'9"					
35	18'3"	Spare				40'
36	18'9"	Spare				40'
37	19'3"	Spare				40'
38	19'9"	Spare				40'
39	20'3"	8 x 40 Cloud				40'
40	25'	Cyclorama				45'
D	21'	Black Border				45'
D	22'6"	Cyc Lights				45'
D	24'	Black Traveler				45'
BackWall	27'6"	Finished Concrete				

STAGE MEASUREMENTS

DSC-USC=50' 11"

SL-SR =86'

Plaster Line-US = 28' 11"

Plaster Line- US edge of Pit = 22'

Crossover is located in rear hallway (see diagram)

Grid Height 64'4"

Loading Bridge 55'

Pin Rail Height 28'

Batten Work Height 4'

Legs/Masking 30'

Borders 16'

Motorized Austrian Grand Drape is Curved w/ Apron (see diagram)

trim time is 14 sec

Cyc is not curved

LOCAL AMENITIES & SERVICES

Hospital Information

Erlanger Medical Center is a full service regional facility. Doctors and specialists are scheduled by the facility. It is located next to the University and is part of the UT Medical System. For further information contact hospital.

Erlanger Medical Center

975 East 3rd Street

Chattanooga, Tennessee 37402

(423) 778-7000

Note: Hospital is 2 blocks from Fine Arts Center

Airport

Located 15 minutes away from the University, Lovell Field serves as home to ASA, American Eagle, US-Air, United, and Northwest Airlines.

- Dry Cleaning
 - Carriage Cleaners
3415 Broad Street
Chattanooga, TN, 37405
(423)267-5856
- Hardware
 - Ace Hardware
1870 Dayton Blvd
Red Bank, TN, 37405
(423)877-9006
- General Shopping
 - Hamilton Place Mall
(423)894-7177
 - Eastgate Mall
(423)894-9199
 - Warehouse Row
(423)267-1111
- Local Bars
 - World of Beer
(423)933-3293
 - The Honest Pint
(423)468-4192
 - Hair of the Dog Pub
(423)265-4165
 - Flying Squirrel
(423)602-5980
 - The Bitter Alibi
(423)362-5070
 - Southside Social
(423)708-3280
- Laundry/Dry Cleaning
 - Carriage Cleaners
715 Signal Mountain Road
Chattanooga, TN, 37405
(423)267-2532
- Site Seeing
 - Tennessee Aquarium
(423)265-0695
 - Hunter Art Museum
(423)267-0968
 - Chattanooga Regional
History Museum
(423)265-3247
 - Carmike Cinemas
(423)826-2375
 - Rock City
(423)820-2531
 - Ruby Falls
(423)821-2544
 - Incline Railway
(423)821-4224
- Local Restaurants
 - Champy's
(423)752-9198
 - Boathouse
(423)622-0122
 - Farmers Daughter
(423)355-5372
 - Maple Street Biscuit
(423)362-5380
(Closed Sundays)

DIRECTIONS TO FAC

From I-75 (KNOXVILLE) I-75 south to I-24 west (Nashville/Birmingham & downtown Chattanooga) stay in right 2 lanes for split after about 2 miles - take 27 North split into the downtown Chattanooga area and exit onto 4th street. Follow 4th street about 8-9 blocks - then turn right onto Mabel (next to the UTC Arena). Mabel will split - stay left - this is now 5th Street. Follow 5th to the stop sign (Palmetto). Turn right onto Palmetto Street. Go 2 blocks - straight through the stop sign at Vine St. and the Fine Arts Center is on the right. Turn right into the parking lot in the back of the building and follow the drive around to a bricked-in courtyard. The loading door is straight ahead

From I-75 (Atlanta) I-75 north to I-24 west (Nashville/Birmingham & downtown Chattanooga) stay in right 2 lanes for split after about 2 miles - take 27 North into the downtown area and exit onto 4th street. Follow 4th street about 8-9 blocks - then turn right onto Mabel (next to the UTC Arena). Mabel will split - stay left - this is now 5th Street. Follow 5th to the stop sign (Palmetto). Turn right onto Palmetto Street. Go 2 blocks - straight through the stop sign at Vine, and then the Fine Arts Center is on the right. Turn right into the parking lot in the back of the building and follow the drive around to a bricked-in courtyard. The loading door is straight ahead.

From I-59 (Birmingham): I-59 east to I-24 east (downtown Chattanooga) - take 27 North split/exit after going around Lookout Mountain into the downtown area and exit onto 4th Street. Follow 4th Street about 8-9 blocks - then turn right onto Mabel (next to the UTC Arena). Mabel will split - stay left - this is now 5th Street. Follow 5th to the stop sign (Palmetto). Turn right onto Palmetto Street. Go 2 blocks - straight through the stop sign at Vine, and then the Fine Arts Center is on the right. Turn right into the parking lot in the back of the building and follow the drive around to a bricked-in courtyard. The loading door is straight ahead.

From I-24 (Nashville): I-24 east (downtown Chattanooga) - take 27 North split/exit after going around Lookout Mountain into the downtown area and exit onto 4th Street. Follow 4th Street about 8-9 blocks - then turn right onto Mabel (next to the UTC Arena). Mabel will split - stay left - this is now 5th Street. Follow 5th to the stop sign (Palmetto). Turn right onto Palmetto Street. Go 2 blocks - straight through the stop sign at Vine, and then the Fine Arts Center is on the right. Turn right into the parking lot in the back of the building and follow the drive around to a bricked-in courtyard. The loading door is straight ahead.

APPENDIX

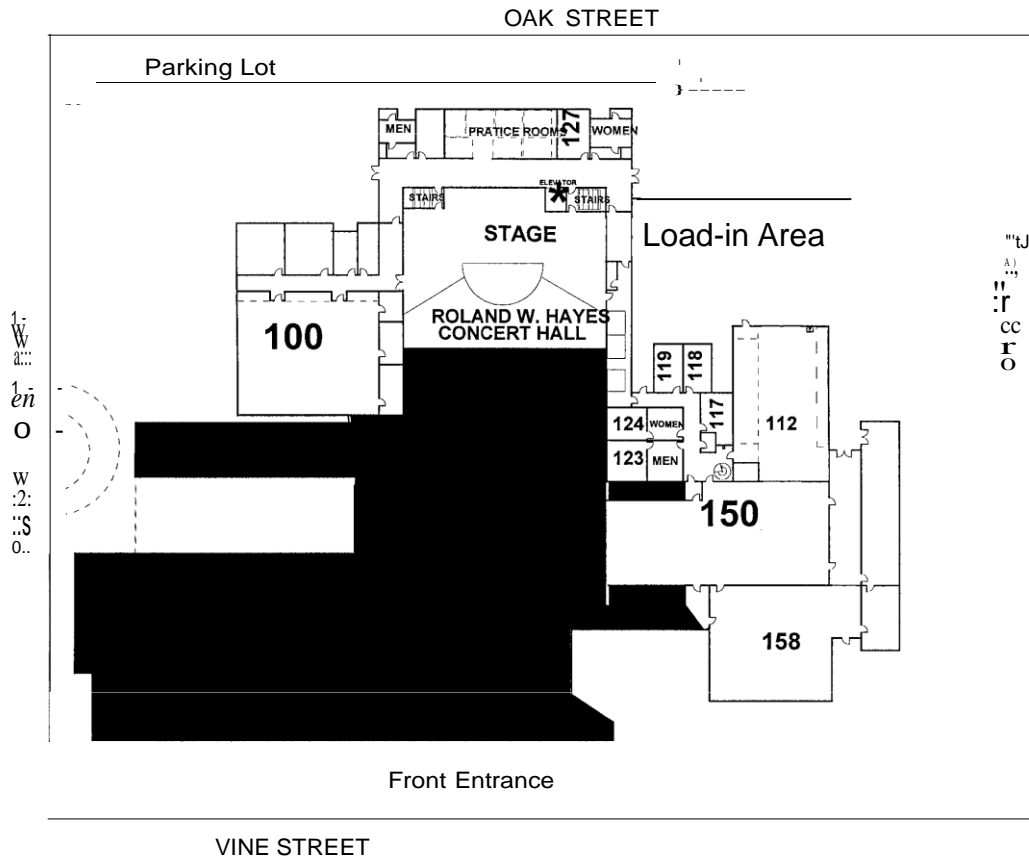
Below you will find reference material and maps to the fine arts center. Please review them carefully, as it is not possible to foresee every need a technical director might need. For the most part, the technical coordinator of the Roland W. Hayes Concert Hall can provide additional information, or supplementary materials to aid you in your work. Please notify the technical coordinator with due advance notice with your materials request, and whatever time restrictions are present.

FINE ARTS CENTER DRAWINGS & ILLUSTRATIONS

FINE ARTS CENTER: GROUND FLOOR.....	12
FINE ARTS CENTER: 3RD FLOOR	13
FINE ARTS CENTER: BUILDING LAYOUT.....	14
ROLAND HAYES CONCERT HALL GENERAL LAYOUT	15
ROLAND HAYES CONCERT HALL: PLAN VIEW	16
ROLAND HAYES CONCERT HALL: DANCE FLOOR LAYOUT.....	17
ROLAND HAYES CONCERT HALL: STAGE PIN CIRCUIT LAYOUT.....	18
ROLAND HAYES CONCERT HALL: XLR/SPEKON INPUTS/OUTPUTS	19
ROLAND HAYES CONCERT HALL: CLEAR-COM OUTPUTS	20

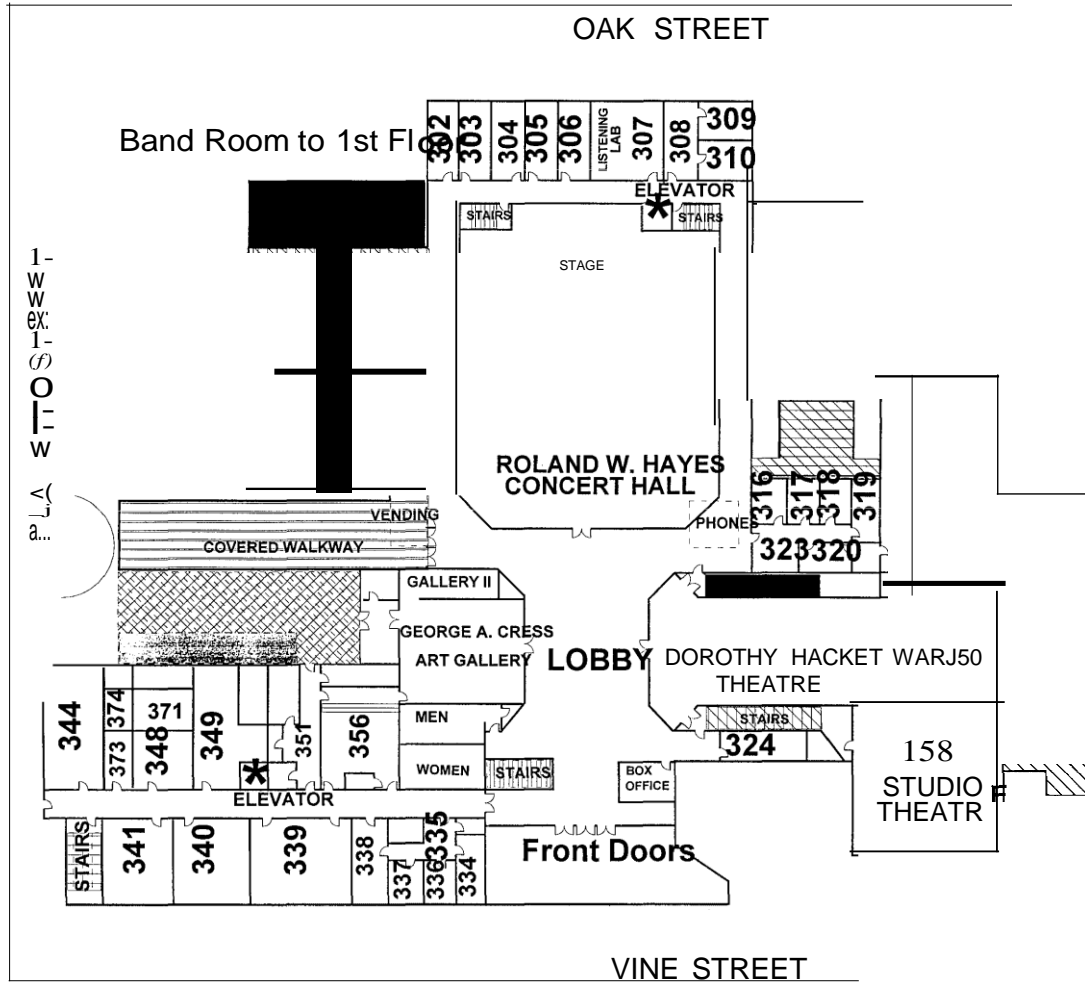
On demand, a higher quality drawing of the above-enumerated illustrations will be provided.

UT/Chattanooga Fine Arts Center Ground Level

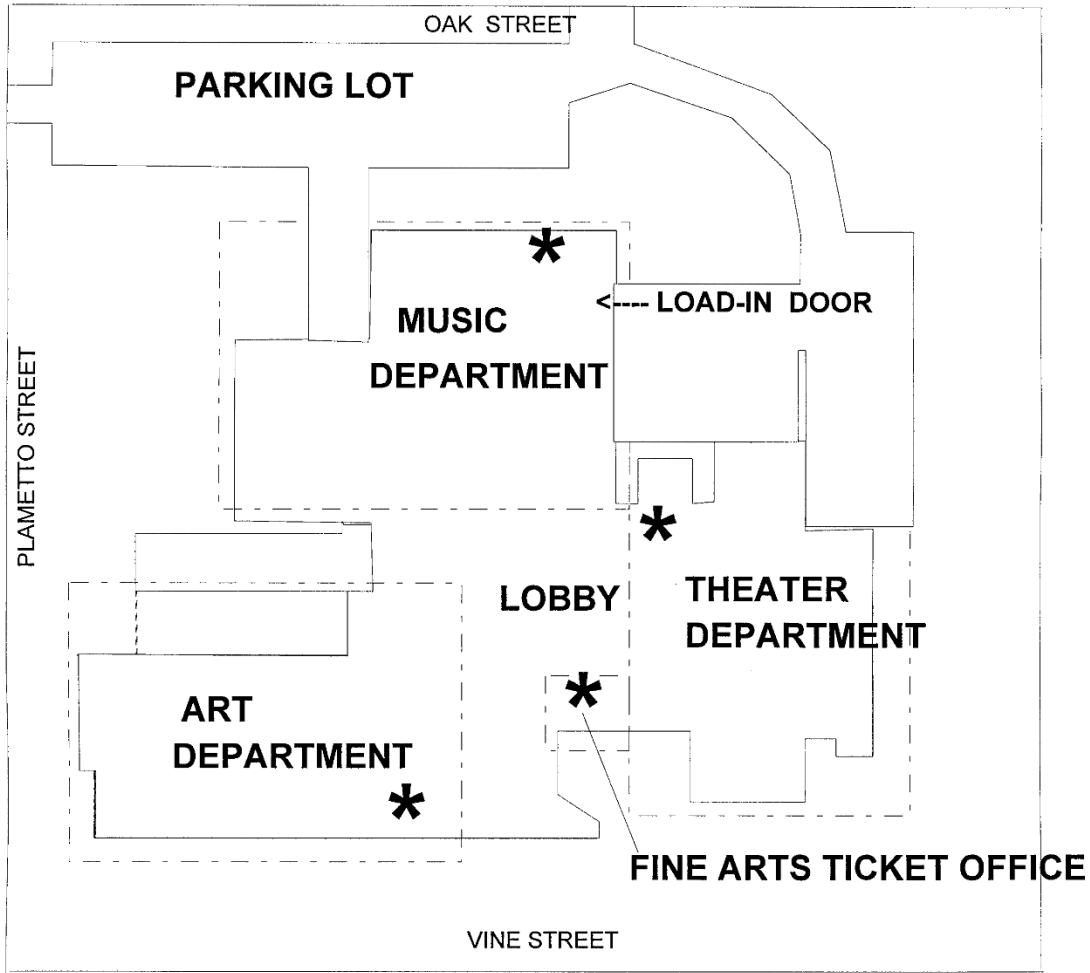


- 100 - Band Room
- 112 - Theatre Scene Shop
- 117 - Theatre Green Room
- 118 & 119 - Private Dressing Rooms (9' x 12')
- 123 - Men's Dressing Room w/ Bath Room (17' x 14')
- 124 - Women's Dressing Room w/ Bath Room (17' x 14')
- 127 - Hayes Dressing Room - unisex - (20' 3" x 21' 6") Can be made into two rooms.
- 150 - Ward Theatre
- 158 - Studio Theatre

3rd FLOOR

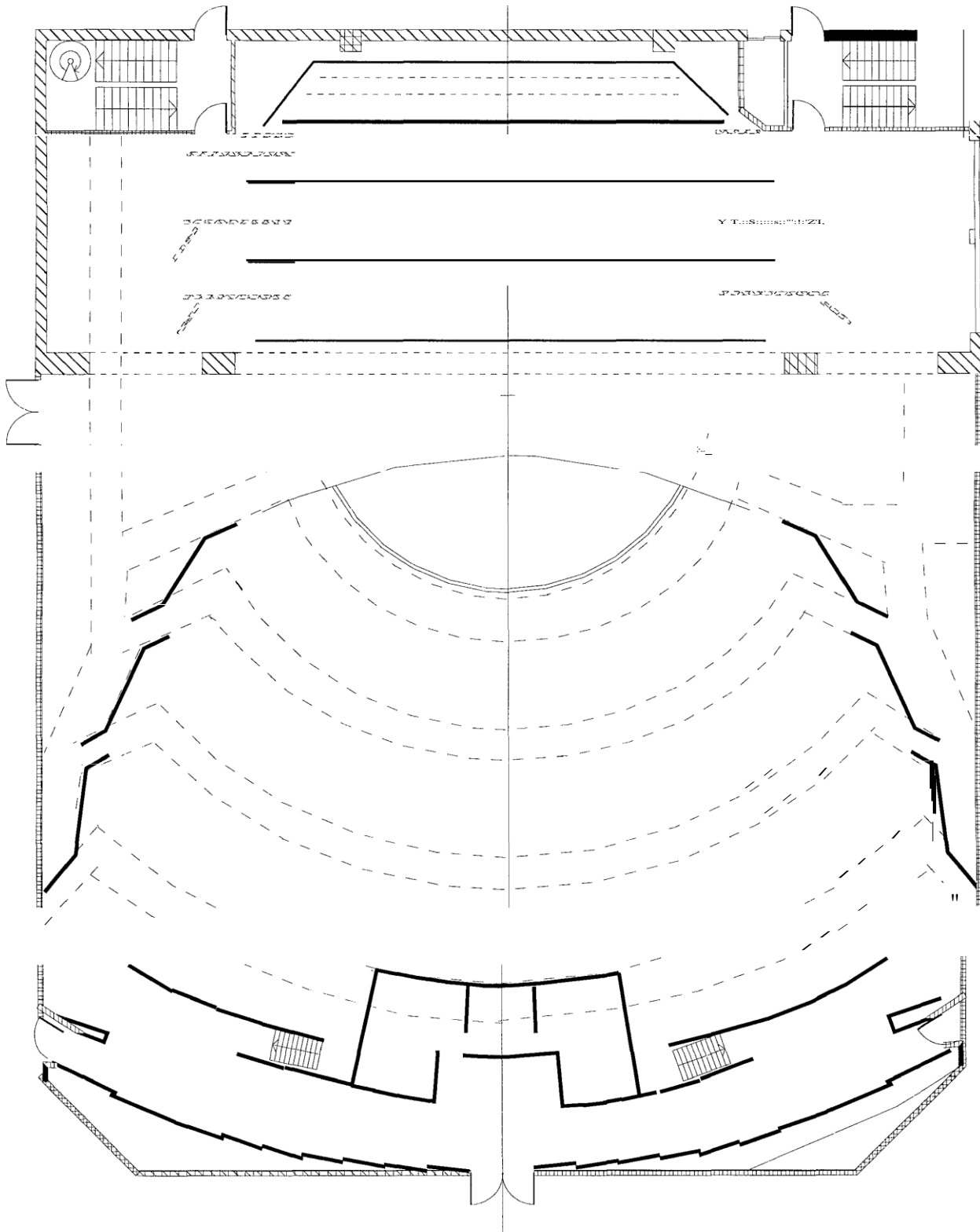


Fine Arts Center: Building Layout
(Note loading door approach - very sharp.)

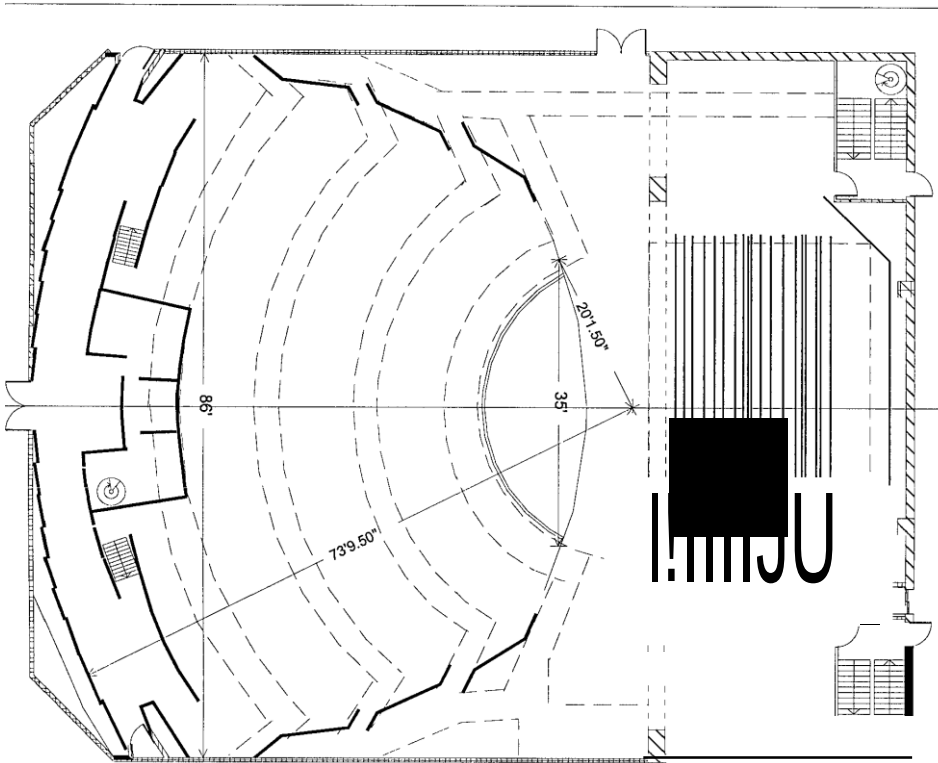


*** = Department offices on the 3rd floor.**

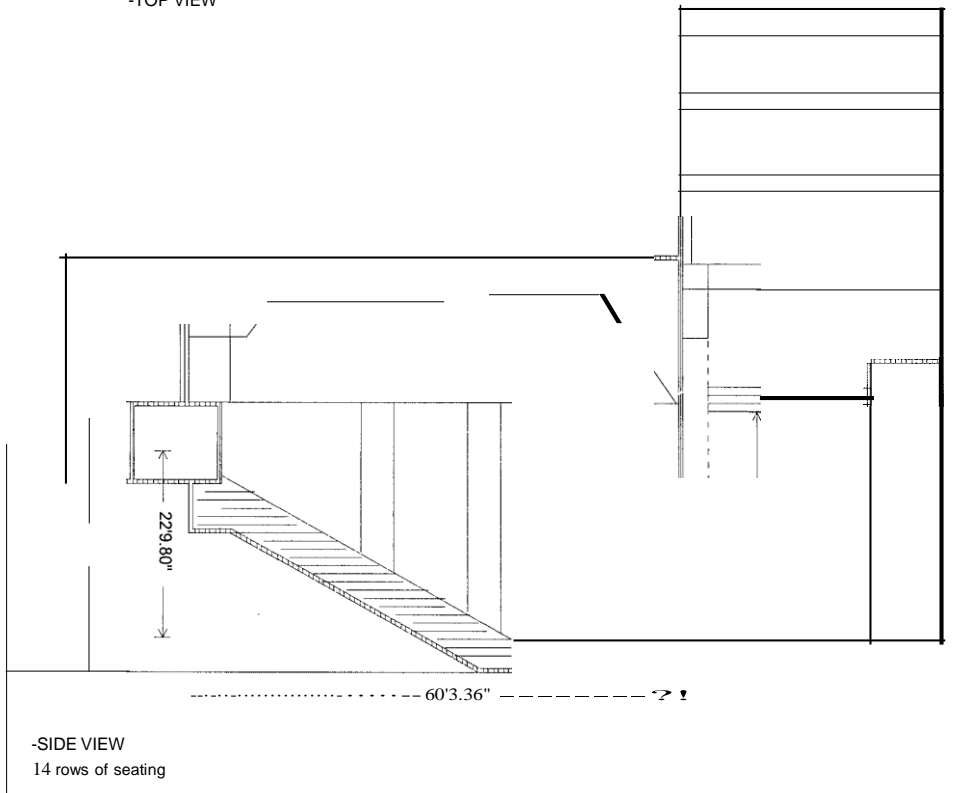
Roland Hayes Concert Hall General layout



Roland Hayes Concert Hall: Plan View

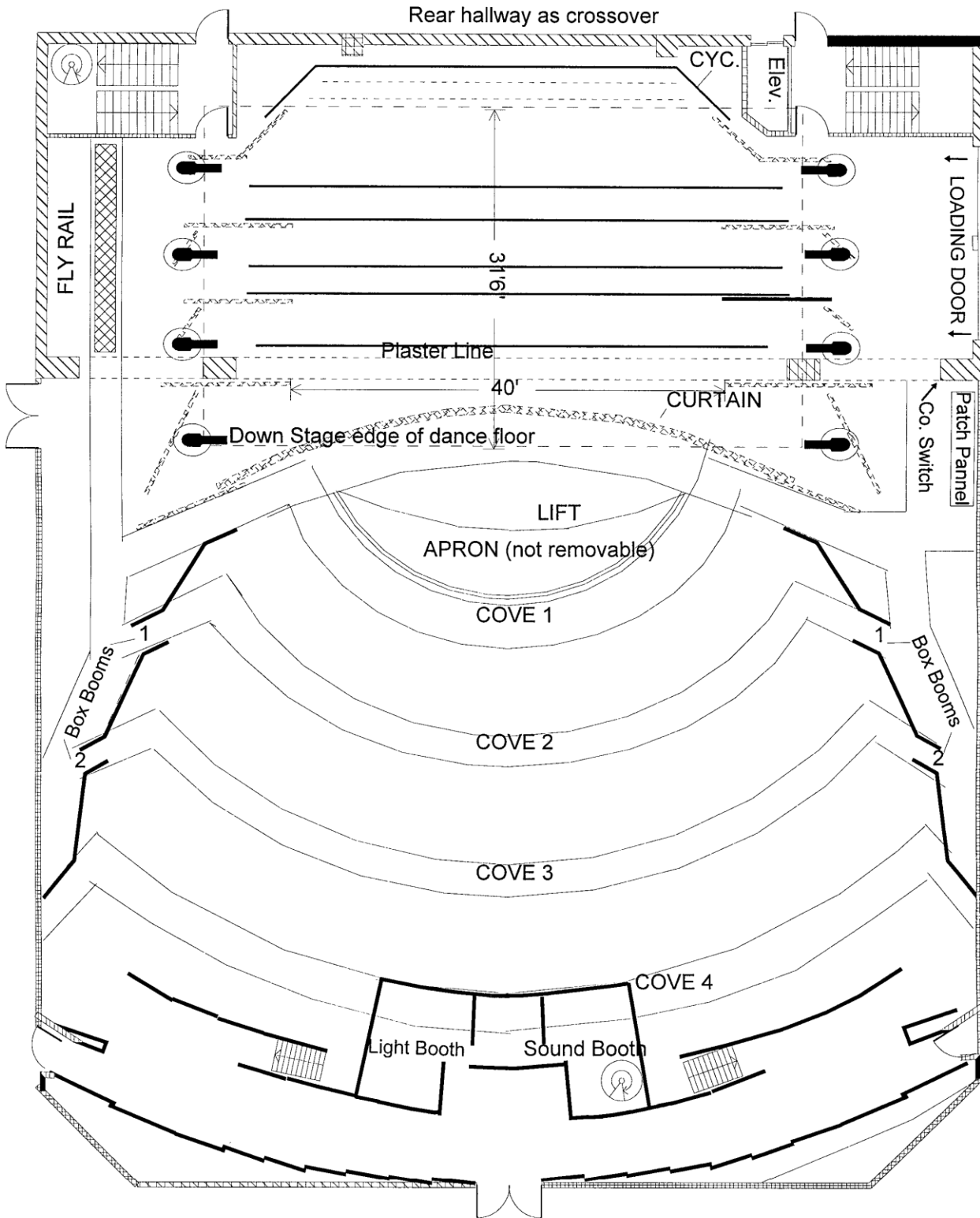


-TOP VIEW

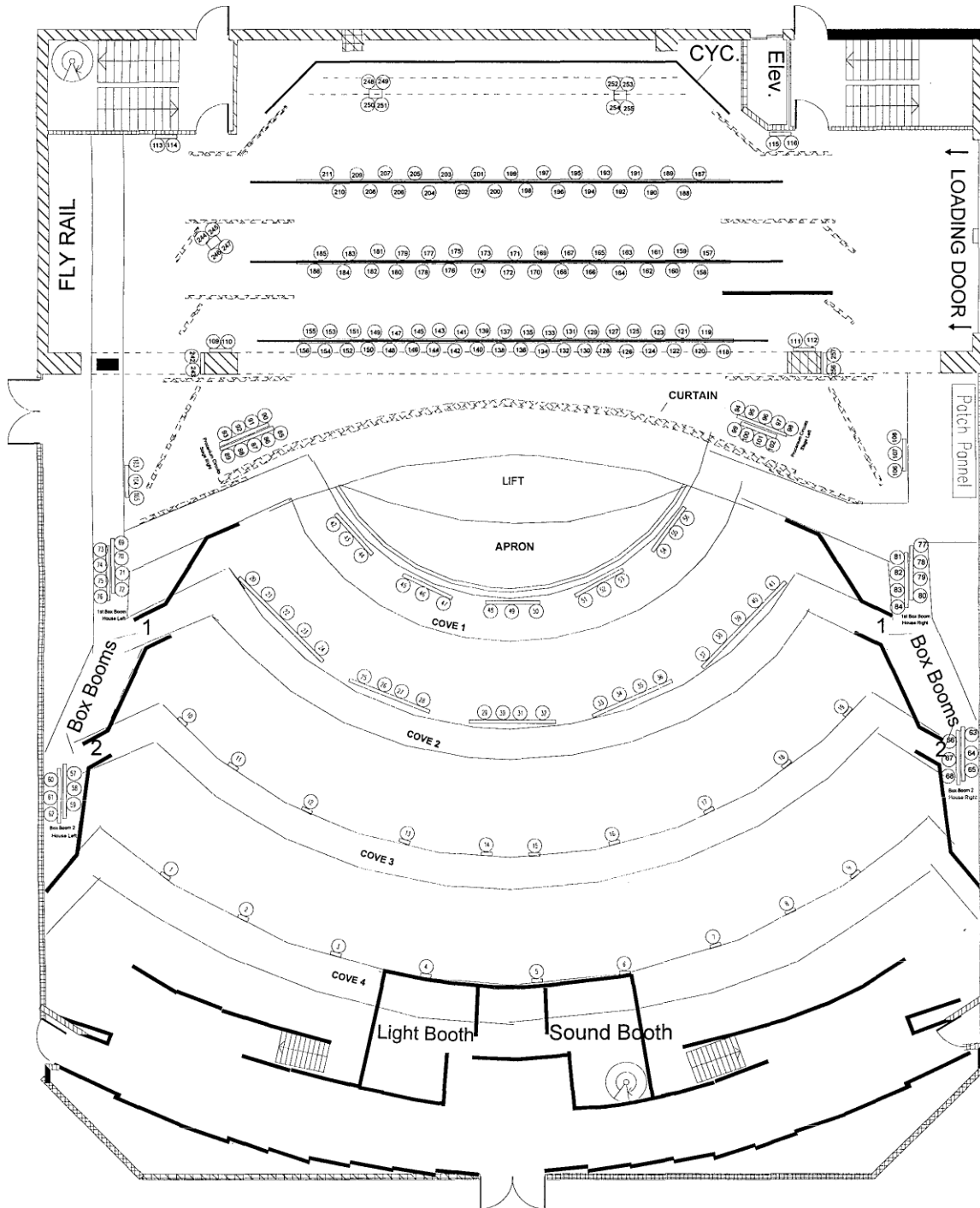


-SIDE VIEW
14 rows of seating

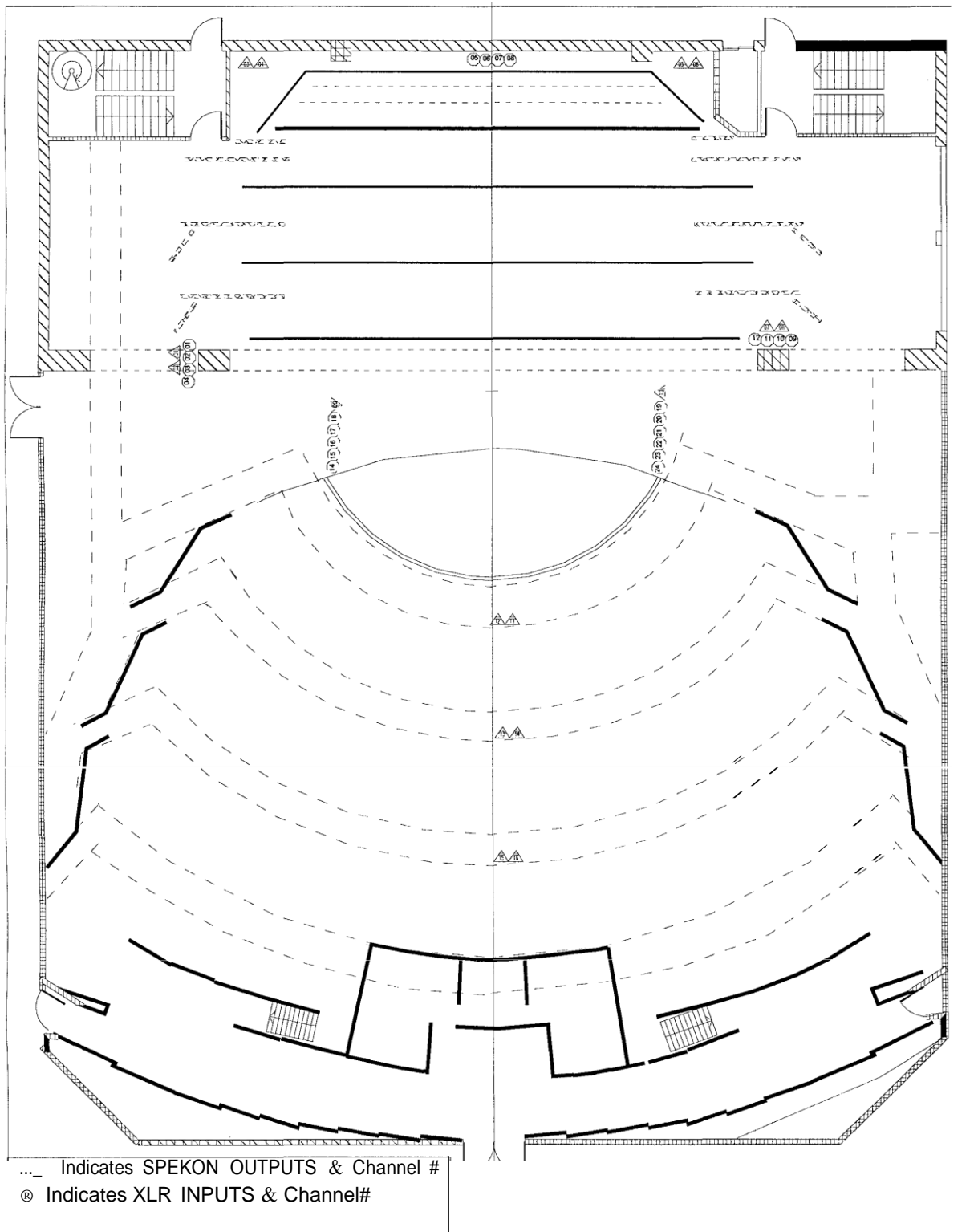
Roland Hayes Concert Hall: Dance Floor Layout
 (Note edge of dance floor in relation to DS edge, tree placement 7 Curtain)



Roland Hayes Concert Hall: Stage Pin Circuit Layout



Roland Hayes Concert Hall: XLR/SPEKON Inputs/Outputs



Roland Hayes Concert Hall: Clear-Com Outputs

